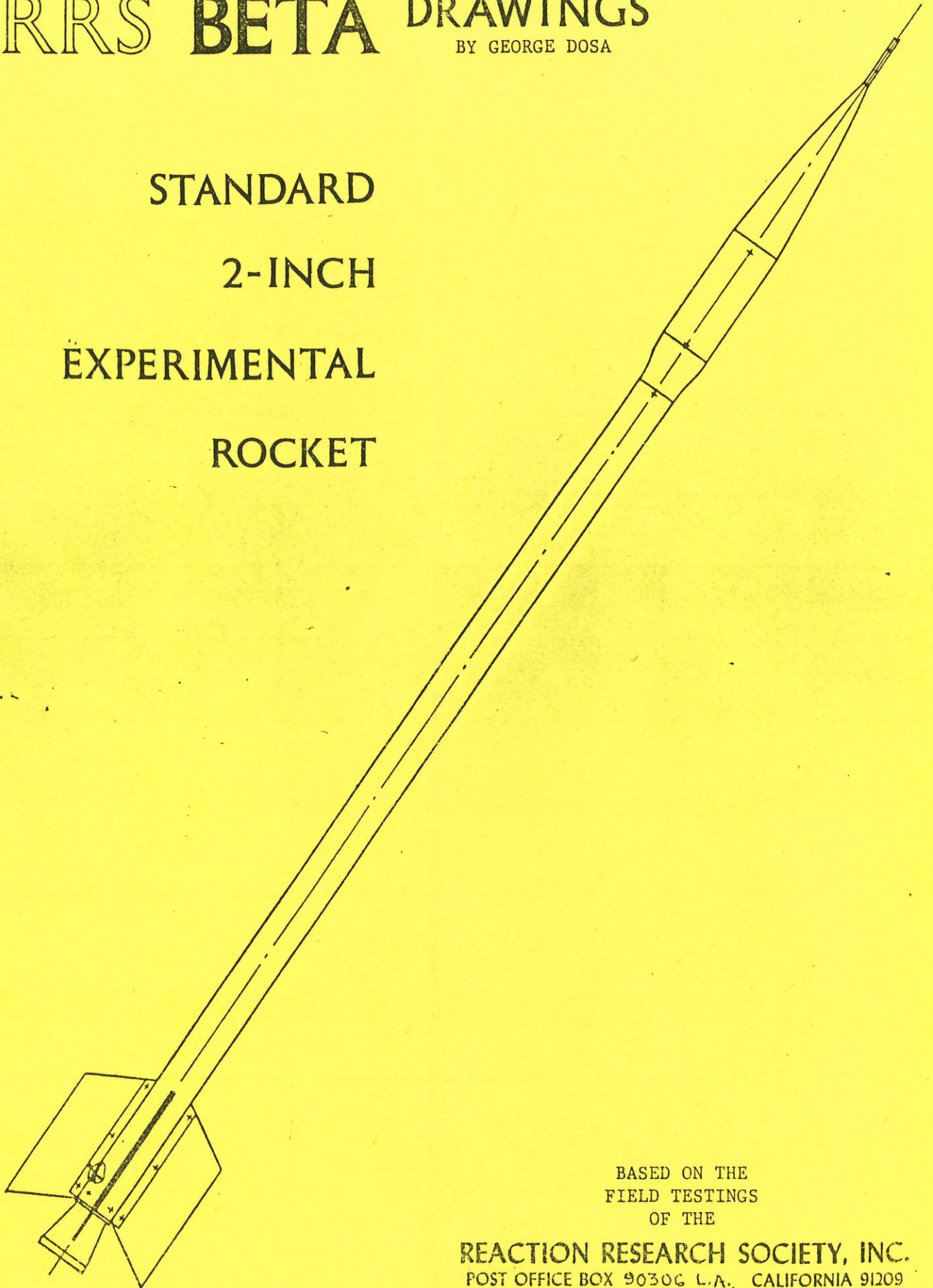


RRS BETA DRAWINGS

BY GEORGE DOSA

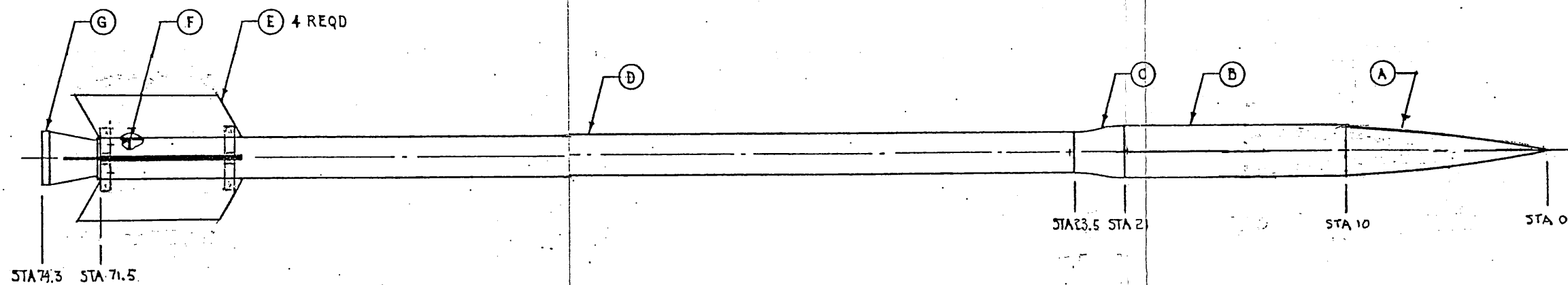
STANDARD 2-INCH EXPERIMENTAL ROCKET



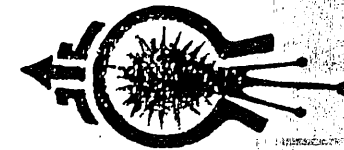
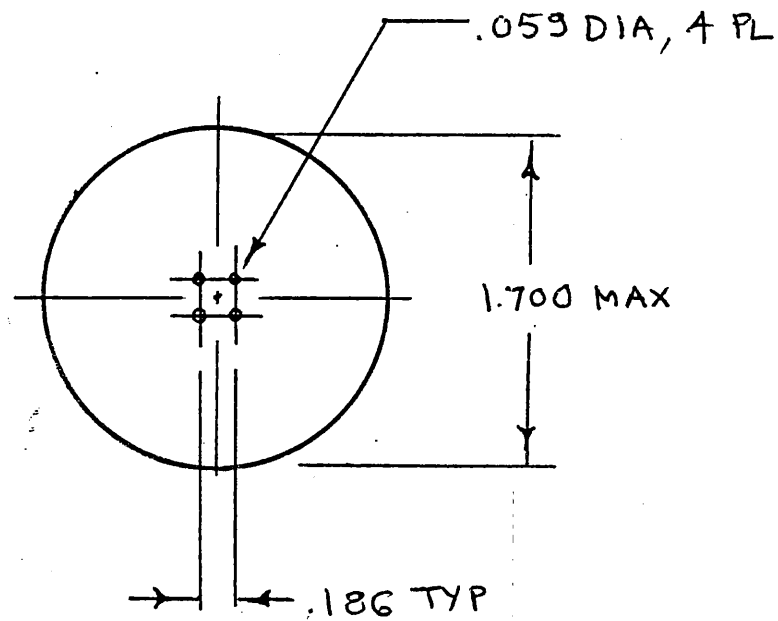
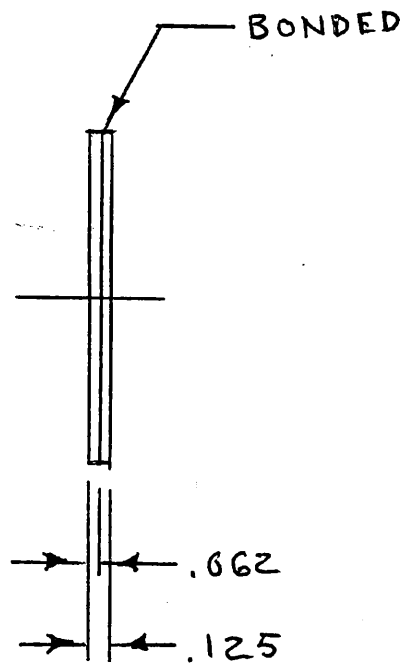
BASED ON THE
FIELD TESTINGS
OF THE

REACTION RESEARCH SOCIETY, INC.
POST OFFICE BOX 90306 L.A., CALIFORNIA 91209

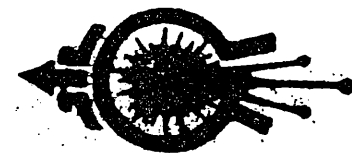
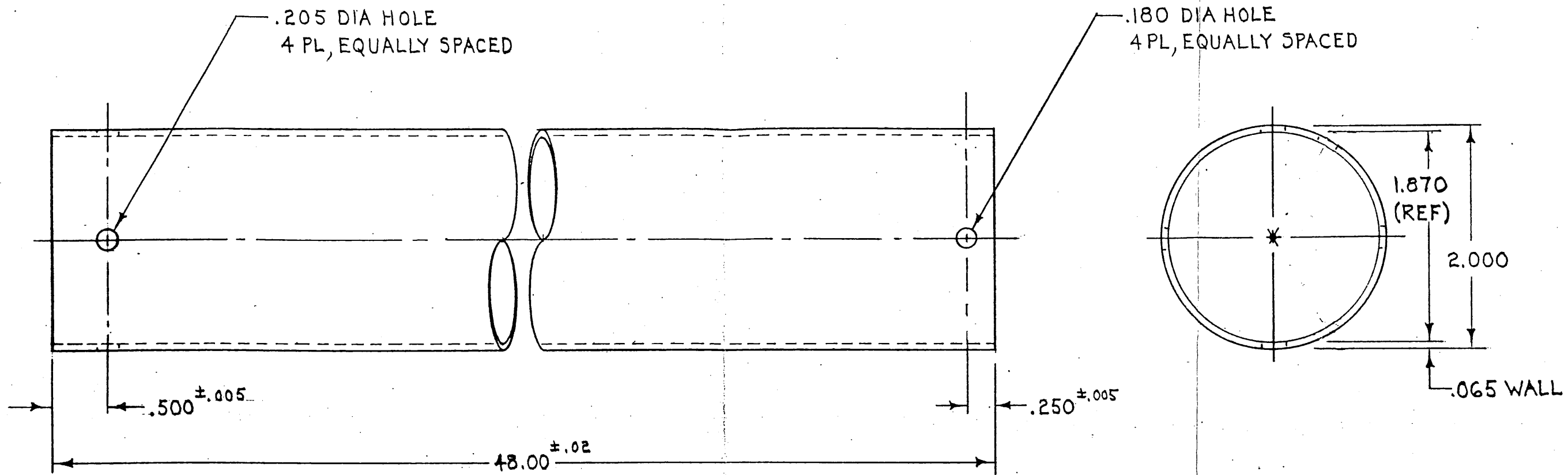
ITEM	REQD	DWG NO.	NAME
A	1	353-7627-00	NOSE CONE ASSY
B	1	353-7626-00	INSTRUMENT SECTION
C	1	353-7625-00	ADAPTER
D	1	353-7620-00	TUBE ASSY
E	4	353-7648-00	FIN
F	1	353-7649-00	DIAPHRAGM
G	1	353-7618-00	NOZZLE



UNIT: RRS 2" MOTOR	
NAME: RRS 2" MOTOR ASSY	
SHEET 1 OF 1	353-7650-00
SCALE: 1/4"	
CLASS: 5-12-60	

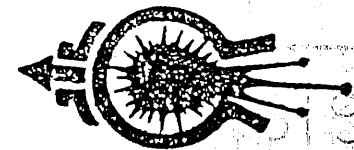
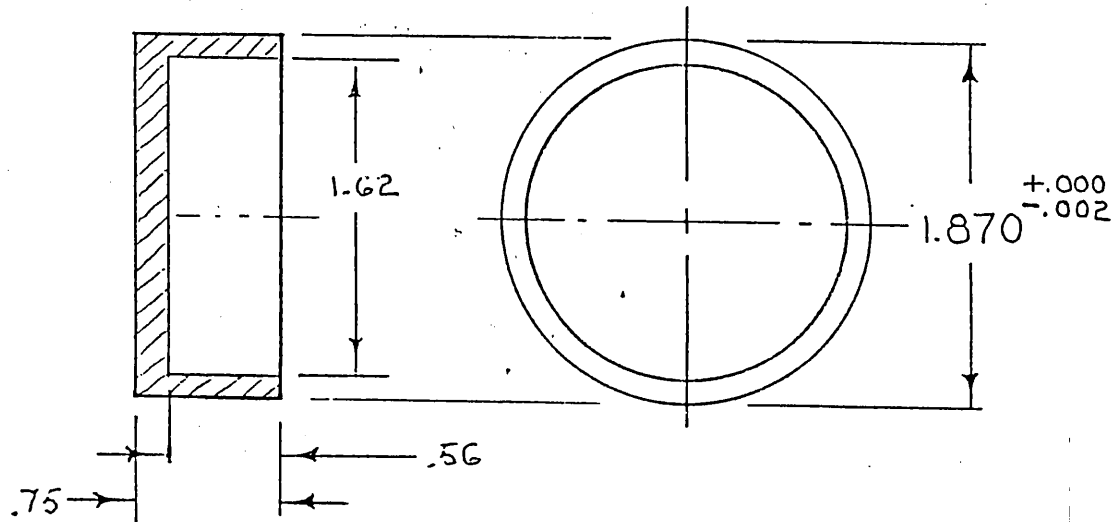


UNIT: RRS 2" MOTOR	
NAME BURST DISK	
LINEN BASED PHENOLIC	
SHEET 1 OF 1	353-7649-00
SCALE: FULL	
CODE: 6-9-21-66	



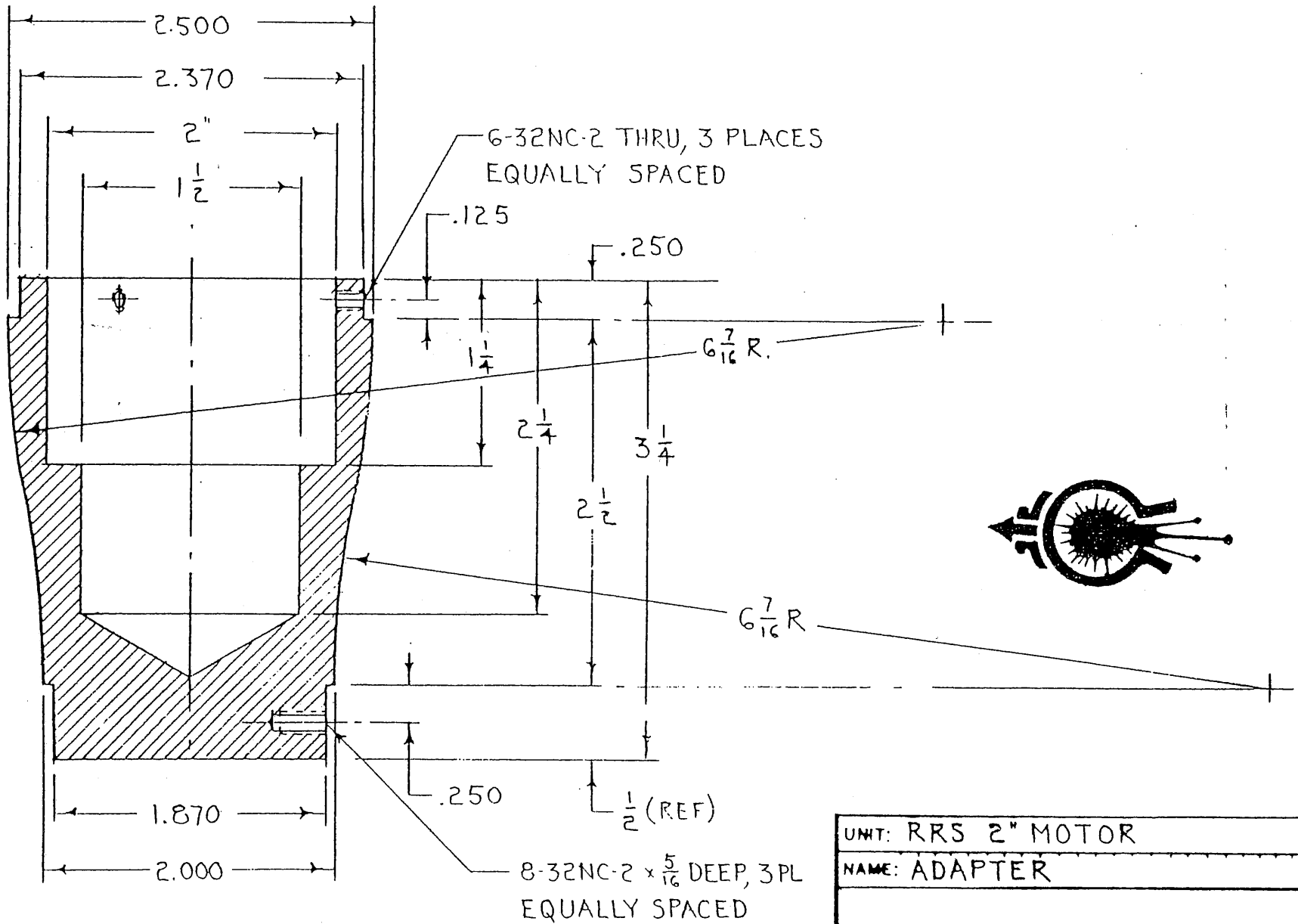
1. MAKE FROM SEAMLESS STEEL TUBING.

UNIT: RRS 2" MOTOR	
NAME: TUBE	
SHEET 1 OF 1	353-7620-00
SCALE: FULL	
CODE: D-8-11-66	



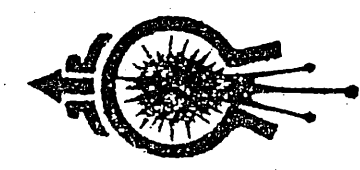
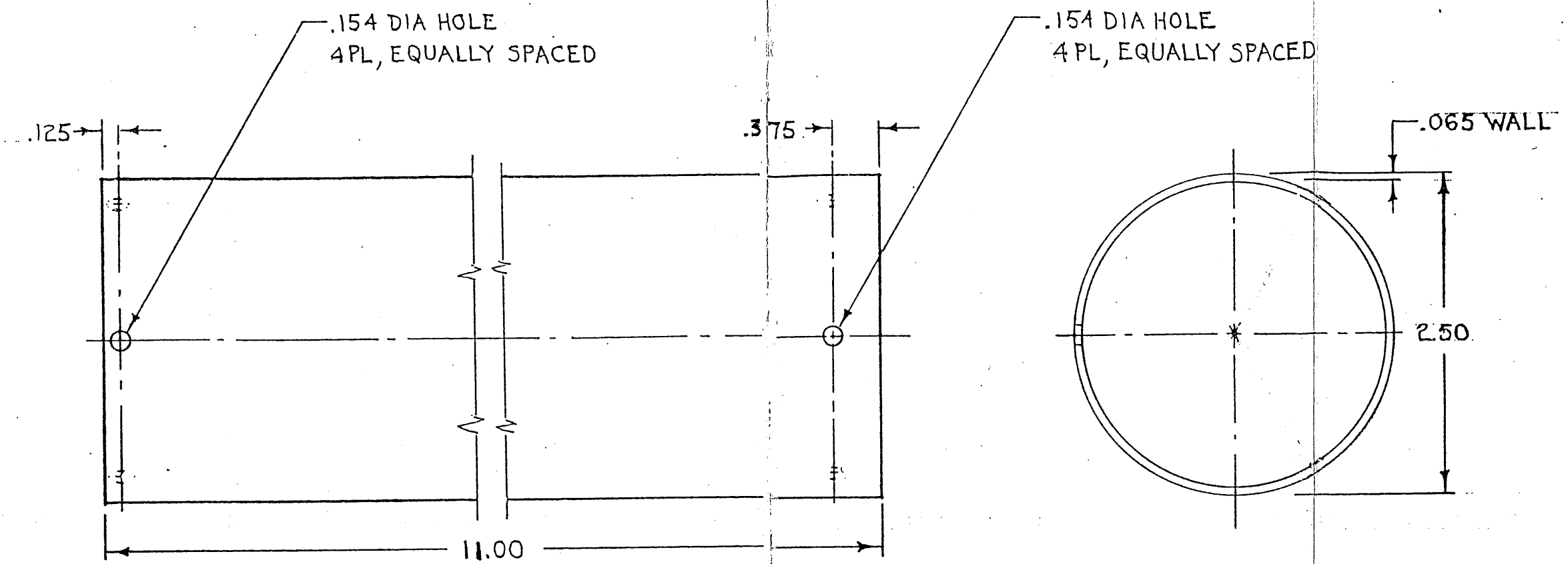
1. MATL: SAE 1020 STEEL.

UNIT: RRS 2" MOTOR	
NAME: BULKHEAD	
SHEET 1 OF 1	353-7619-00
SCALE: FULL	
CODE: 6-9-20-66	



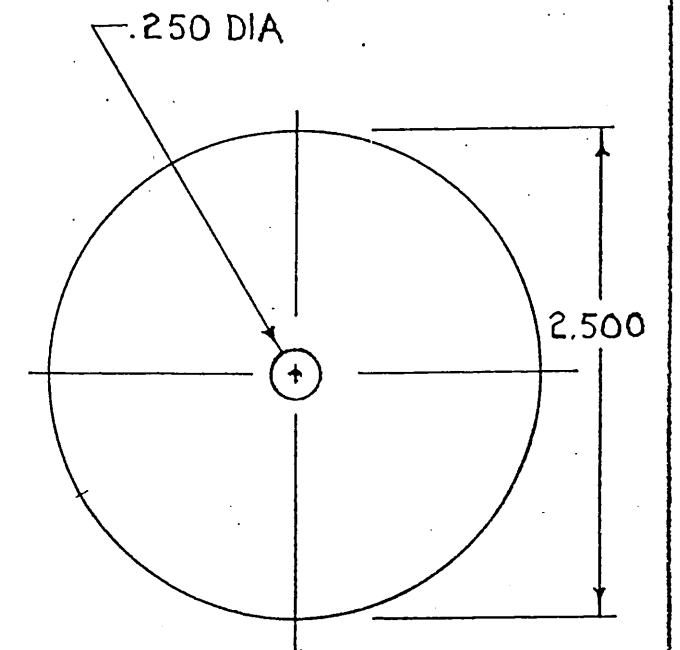
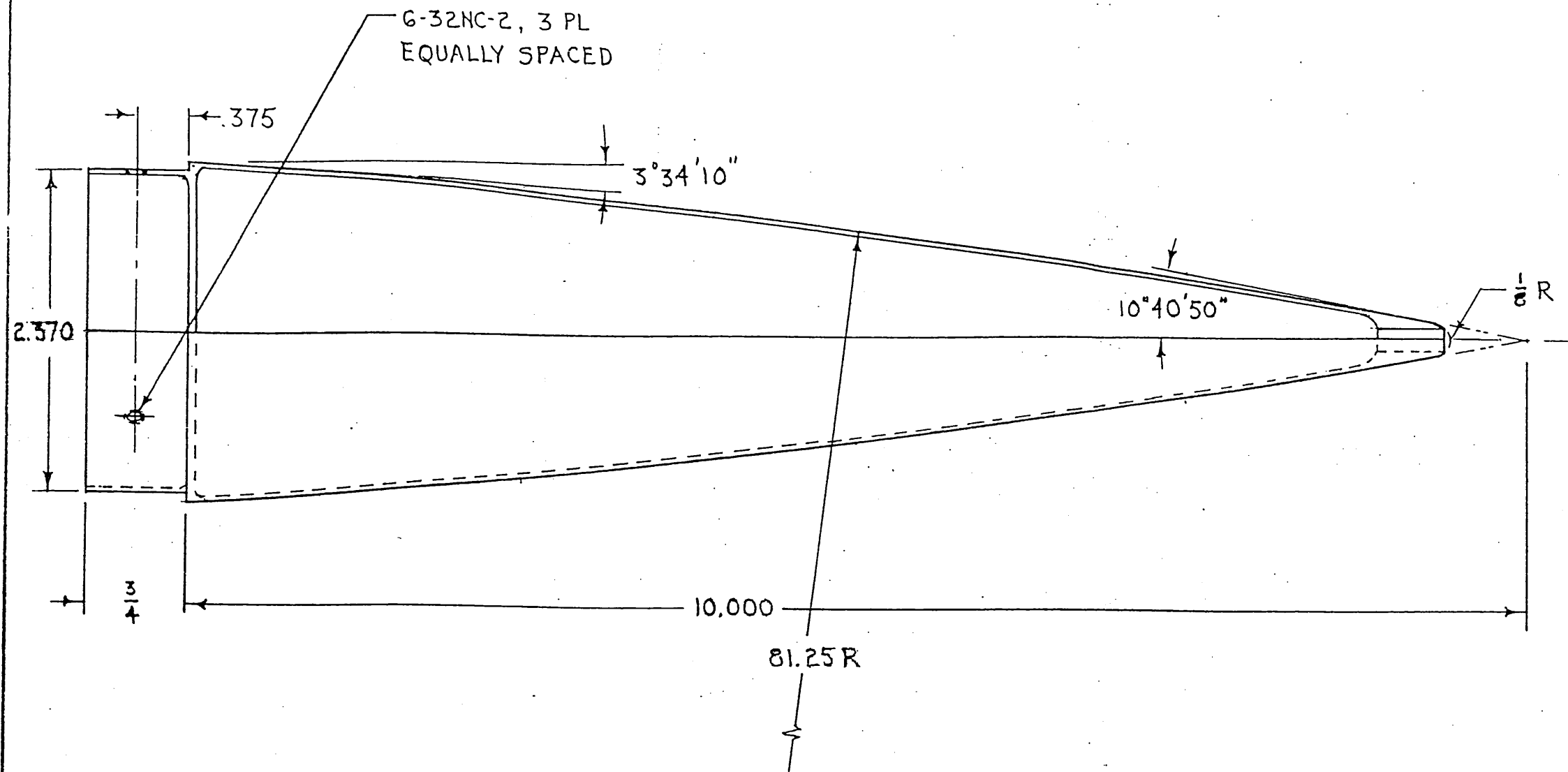
2024-T4 AL ALLOY

UNIT: RRS 2" MOTOR	
NAME: ADAPTER	
SHEET 1 OF 1	353-7625-00
SCALE: FULL	
CLASS: 6. 9-12-66	



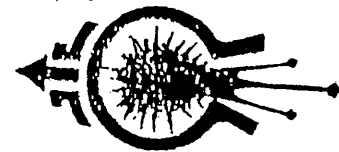
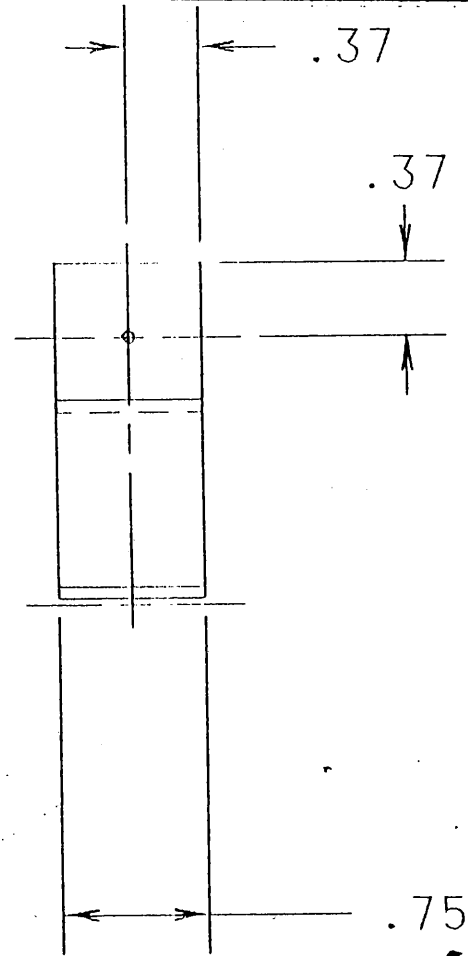
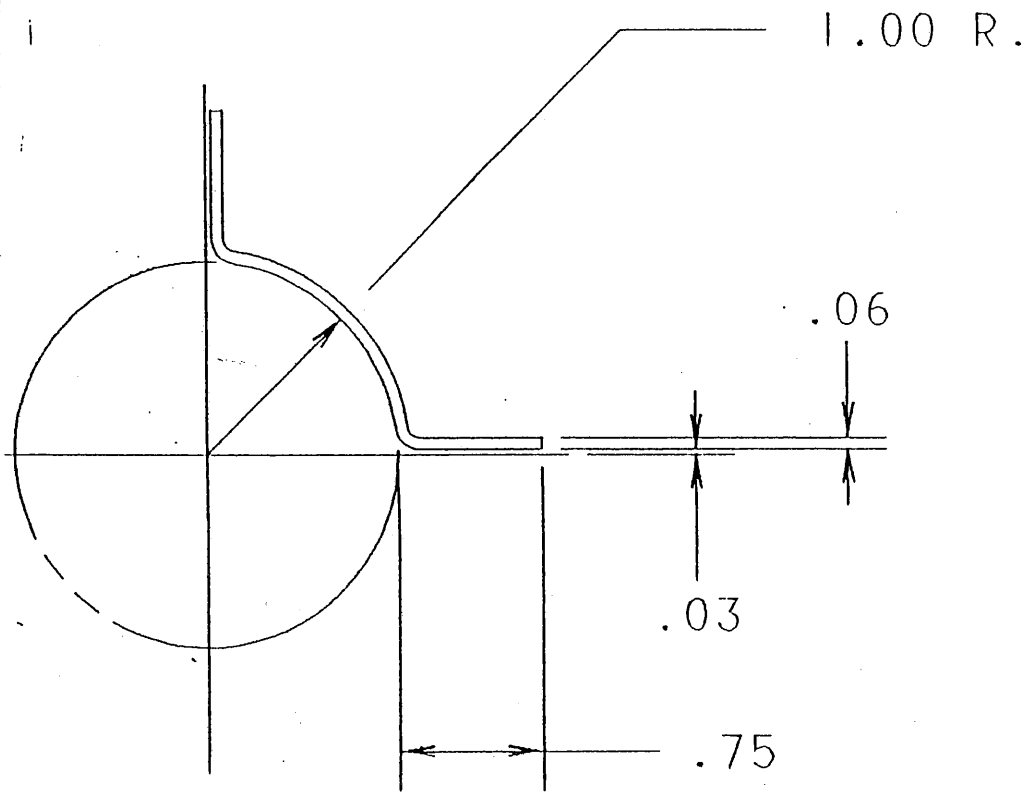
1. MATL: 2024-T4 AL ALLOY OR EQV.
NOTE :

UNIT: RRS 2" MOTOR	
NAME: INSTRUMENT SECTION	
SHEET 1 OF 1	353-7626-00
SCALE: FULL	
CLASS: 5-21-66	

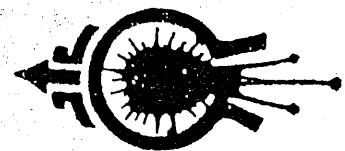
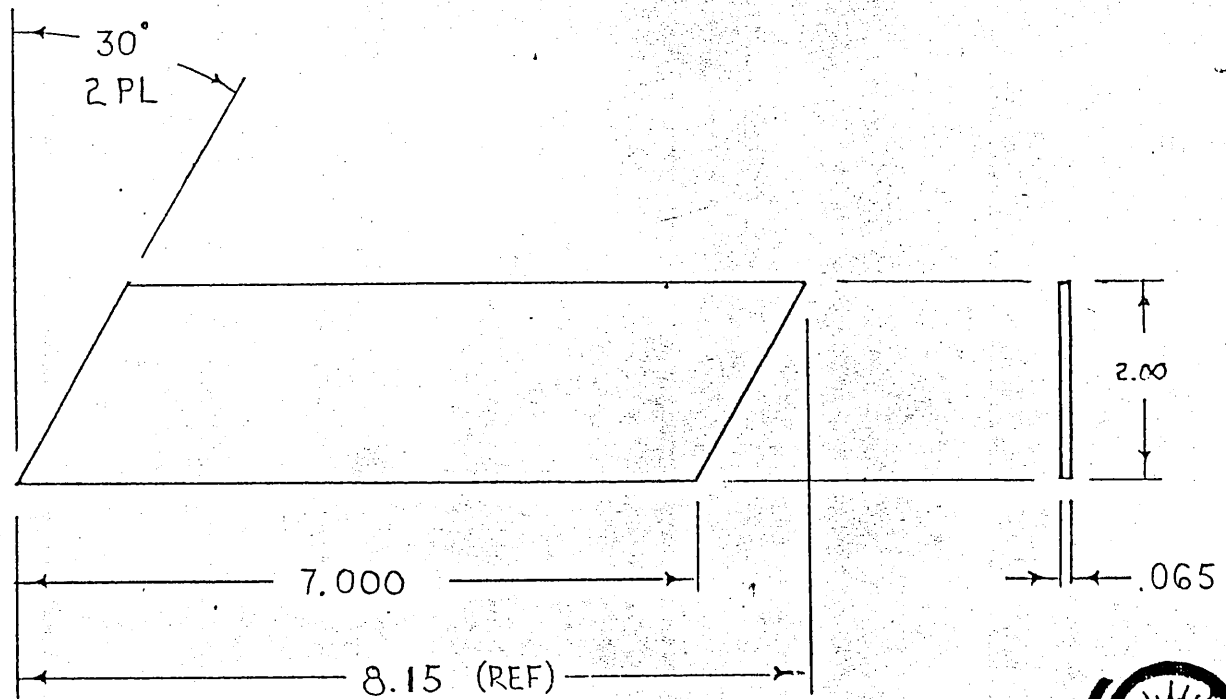


MATL: FIBER GLASS & POLYESTER RESIN.

UNIT: RRS 2" MOTOR	
NAME: NOSE CONE	
SHEET 1 OF 1	353-7627-00
SCALE: FULL	
CODE: D-5-15-66	



UNIT: RRS 2" MOTOR	
NAME: FIN BRACKET	
MATERIAL: STEEL, 8 REQD	
SHEET 1 OF 1	353-7634-00
SCALE: FULL	
DATE: 6-9-21-66	



1. MATL: 2024-T4 AL ALLOY.

UNIT: RRS 2" MOTOR	
NAME: FIN	
SHEET 1 OF 1	353-7648-00
SCALE: HALF.	
CLASS: 6 5-12-66	